

# The Write Line

~ April 2018 ~



Rob Dinwiddie, BS Porsche Cayman S

The official newsletter of the Salina Region SCCA

## Regional Executive Views

The 2018 season has officially started, be it a little chilly we had a good turnout for our first event. There was a total of 41 drivers for the solo plus three who came only for the test and tune.

Our next event will be the solo doubleheader April 14-15 during the Evolution School weekend. The solo will be on the south end of our East Crawford Recreation Area site while the school will be on the north end. While the course is greatly reduced, it may become a two-lap run so we end up with more than 20 second times. This poses some challenges for the course designers but they always come up with some very creative courses. This does create some issues with gridding so we will be going back to the old system. Also, the paddock area will be small so cooperation will be required.

Speaking of the Evolution School, if you want to improve your times this is the place to learn how. There are three days of intense training if you choose – do one, two, or all three – starting with the basics all the way to the Challenge School where you take your newly acquired skills and drive against your trainers to see who gets the best time. If you haven't registered for that you still have time so don't wait.

We have changed the event times. Registration, novice walk, driver's meeting, and first car off have all been made earlier so please check the website or the event registration page so you arrive early enough to prepare for the day (or

just note the schedule at the bottom of this page). Our intention is for people to finish earlier so as not use up their entire day, and get home before the heat is its highest.

In the attempt to evolve and create the most enjoyable experience we will be trying different things in registration and other operational things with the event. If there is something you especially like or dislike please let myself or one of the other board members know, this is the only way we will be able to tell if it is working. The board meetings are always open to the members so if there are things you wish the bring up please join us. You never know this may be a part of the club operation that you will really enjoy!

See you on course,

—Monte Rans, RE Salina Region



### ► Next Events ◀

## April 13-14-15 - Evolution Schools

Phase 1 Friday – Phase 2 Saturday – Challenge School Sunday

Register at [www.evoschool.com](http://www.evoschool.com)

## April 14-15 - Doubleheader Solos

East Crawford Recreation Area

Pre-register (save \$5) – use link at [www.salinascca.org](http://www.salinascca.org)

On-site registration opens 8:00, closes 9:30 ~ Course open to walk by 8:30  
Novice Coursewalk 9:30 ~ Driver's meeting 10:00 ~ Cars on course by 10:30

### Next Business Meeting

April 14

After the Saturday event  
Location ECRA  
(Probably at the Evo School)

*Business meetings  
are open to all  
members and guests*

New Earlier Schedule!



## Board Members ~ 2018

• **Regional Executive**

**MONTE RANS, Hesston**  
620-327-2711 / mcrans@cox.net

• **Assistant R.E.**

**JIM HUND, Manhattan**  
785-550-2655 / jvhund00@gmail.com

• **Secretary**

**CLINT HOLMES, Junction City**  
409-363-9889 / txspartano07@live.com

• **Treasurer / Asst. Equipment Manager**

**KEN KENNEDY, Salina**  
785-643-2225 / kennethkennedy@cox.net

• **Past R.E.**

**BILL PREHEIM, Minneapolis**  
316-772-3638 / cpreheim42@hotmail.com

• **Solo Chair/Chief of Safety**

**DENNIS SMITH, Concordia**  
785-243-6753 / smnck@att.net

• **Member At Large**

**Newsletter and Membership**  
**ROCKY ENTRIEN, Salina**  
785-827-5143 / rocky@spitfire4.com

• **Member At Large**

**Chief Registrar**  
**NANCY SMITH, Concordia**  
785-243-5192 / mustang.nanny@yahoo.com

• **Member At Large**

**Chief of Tech**  
**RODNEY WALTERS, Abilene**  
(785) 209-1036 / fairwarning5@gmail.com

• **Member At Large**

**Equipment Manager**  
**ABNER PERNEY, Salina**  
785-822-8570 / abscars@yahoo.com

• **Member At Large**

**Webmaster / Chief of Timing**  
**BRIAN TEFFT JR., Topeka**  
785-220-1835 / btefft13@gmail.com

• **Member At Large**

**Social Media / Facebook**  
**ARTT MANN, Manhattan**  
785-565-3155 / kskartracing@gmail.com

## Salina Region Schedule ~ 2018

All at East Crawford Recreation Area unless noted otherwise

<u>Event</u>	<u>Chair</u>	<u>Safety</u>	<u>Youth</u>
April 13-14-15 (Evolution Schools)	Rocky Entrién	Bill Preheim	
April 14-15 (Twin Solos)	Gang Green	Dennis Smith	
May 6 (Solo)	Bill Preheim	Dennis Smith	
May 20 (Solo)	Clint Holmes		
Jun 1-2-3 (Divisional Solo)	Brian Tefft Jr	Monte Rans	
Jun 24 (Solo)	Abner Perney	Ken Kennedy	
Jul 15 (Solo)	Powercat Motorsports		
Aug 12 (Solo)	Don & Mike Herrick		
Sep 9 (Solo)	Hank & Sharon Brillhart		
Sep 23 (Solo – RE Challenge #1)	Monte Rans		
Oct 7 (Solo at Yoder – RE Challenge #2)	Wichita Region	—	
Oct 21 (Solo – Octoberfest 29)	Salina Region Board		
Nov 4 (Solo)	Jim Hund		

### MiDiv



### SPS/R&S MiDiv Solo Series - 2018

Apr 20-22 — Topeka (Heartland Motorsports Park)  
May 18-20 — Oklahoma City (Remington Park)  
June 1-3 — Salina (East Crawford Rec. Area)  
June 22-24 — Neosho, Mo. (Crowder College)  
Aug 3-5 — Lincoln, Neb. (Lincoln Airpark)

**SCCA 2018 Solo Nationals ~ Sep. 4-7 ~ Lincoln, Neb.**

## MEETING MINUTES

(Subject to correction and approval at the next Salina Region board meeting)

Salina Region SCCA March 17, 2018 meeting was called to order by R.E. Monte Rans at 1:27 p.m. at East Crawford Recreation Area, Salina KS. Board Members present were Monte Rans, Rocky Entrién, Nancy Smith, Bill Preheim, Artt Mann, Jim Hund, Abner Perney, Brian Tefft and Rodney Walters, and later Ken Kennedy.

Feb. 24, 2018 minutes - Motion to approve by Bill, second by Jim, approved unanimously.

Treasurer's Report, Feb. 2018 - Motion to approve by Rocky, Second by Bill, approved unanimously.

### Old Business -

Event at Ft Riley – Monte and Artt are in contact with a Ft. Riley official. Further developments to be announced.

### New Business -

Official region address for tax reports – Treasurer Ken Kennedy's address will be used.

Schedule Changes – After much discussion it was decided to move up our event schedule by 30 minutes, motion by Bill, second by Jim, approved unanimously – Registration and Tech to open at 8:00 a.m. and close at 9:30, Course open to walk by 8:30, Novice Coursewalk 9:30, Driver's Meeting 10:00, Cars on course by 10:30. Recommend that attendees should arrive by 8:00. It was noted that event chairs must begin course setup earlier.

Patchwork – Ken obtained approval from city to patch bad areas of concrete on the site, will take care of patching (possibly a work party) after weather gets warmer.

Next Meeting – April 14, 2018, at East Crawford after Saturday event.

Meeting Adjourned – 1:57 p.m.

Submitted by: Jim Hund, Asst. R.E.



# Events Elsewhere - 2018

A calendar of AutoX and RallyX events by the Wichita, Kansas, Kansas City, Nebraska, NeOkla and Oklahoma Regions of SCCA. Go see how others do it!

ALWAYS CONFIRM THE EVENT BEFORE MAKING A LONG TRIP!

(\* = Salina Region event on this date)

## AUTOCROSS

- Apr 8..... Nebraska @ Lincoln Airpark, Lincoln, Neb.  
 ..... Oklahoma @ Remington Park  
 ..... Wichita @ Sunflower Aerodrome, Yoder  
 Apr 15.....\* NeOkla @ Fair Meadows, Tulsa State Fairgrounds  
 Apr 29..... Wichita @ Sunflower Aerodrome, Yoder  
 May 5-6.....\* Nebraska @ Lincoln Airpark, Lincoln, Neb.  
 May 6.....\* NeOkla @ Fair Meadows, Tulsa State Fairgrounds  
 ..... Oklahoma @ Remington Park  
 May 25-27... National @ Lincoln Airpark: Spring Nationals (Pro/Tour)  
 May 27..... Wichita @ Sunflower Aerodrome, Yoder  
 Jun 9-10..... Kansas @ Heartland Park Topeka (double solo)  
 Jun 9..... Nebraska @ Lincoln Airpark, Lincoln, Neb. **SOLO TRIALS**  
 Jun 10..... Nebraska @ Lincoln Airpark, Lincoln, Neb.  
 ..... NeOkla/Oklahoma @ Old Tanger Outlet, Stroud, Okla.  
 Jun 17..... Wichita @ Sunflower Aerodrome, Yoder  
 Jun 24.....\* Nebraska @ Lincoln Airpark, Lincoln, Neb.  
 ..... Oklahoma @ Remington Park

## RALLYCROSS

- Apr 21..... Nebraska at I-80 Speedway, Greenwood, Neb.  
 Apr 29..... Kansas @ Santa Fe Trail Cycle Park, Carbondale, Ks.  
 May 19-20\*.. KC @ Lucas Oil Spwy, Wheatland, Mo., MiDiv RallyX Chal.  
 Jun 17..... Nebraska at I-80 Speedway, Greenwood, Neb.  
 Jul 1..... KC/Kansas @ Santa Fe Trail Cycle Park, Carbondale, Ks.  
 Jul 15.....\* Nebraska at I-80 Speedway, Greenwood, Neb.  
 Jul 21-22.... KC/Kansas @ Heartland Motorsports Park, Topeka  
 Aug 26..... KC @ I-35 Speedway, Winston, Mo.  
 Sep 16..... Nebraska at I-80 Speedway, Greenwood, Neb.  
 Sep 23..... Kansas @ Santa Fe Trail Cycle Park, Carbondale, Ks.



## WELCOME NEW MEMBERS

- **Bruce & Charlene Bettinger**, Derby, are a couple of old-timers of Wichita Region who have now become Associate Members in Salina Region. Bruce is an SM and ITA racer, Charlene is MiDiv's Divisional Administrator of Timing and Scoring and also Secretary of the MiDiv Executive Committee
- **Matthew Polzin**, Ellis, joined SCCA last year while living in Michigan and recently moved to Kansas. He has a Mustang GT to run in F Street.
- **Zachary Smith**, Wichita, joined at our opening event and ran his Mustang in the new-last-year Street Touring Ponycar class.

# Go

## Racing!



Four road course tracks are within a 3½-hour drive of Salina. Be part of the action as a race worker -- flagging on corners, timing, grid, tech, etc. Or driver?

- Hallett Motor Racing Circuit, Hallett, Okla.
- Heartland Motorsports Park Topeka, Ks.
- Motorsports Park Hastings, Hastings, Neb.
- Raceway Park o/t Midlands, Pacific Jct. Iowa

## ROAD RACING

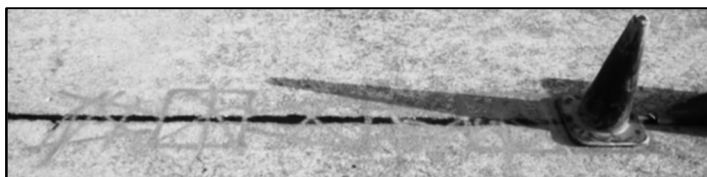
- Apr 7-8..... Super Tour @ Hallett Motor Racing Circuit, Okla.  
 Apr 21-22..... Majors @ Heartland Motorsports Park, Topeka  
 Jul 21-22..... MidAm @ Heartland Motorsports Park, Topeka  
 Sep 1-2..... MidAm @ Hallett Motor Racing Circuit, Okla.  
 Sep 22-23.....\* MidAm @ Raceway Park o/t Midlands, Pacific Jct. Iowa  
 Oct 16-21..... The Runoffs @ Sonoma Raceway, Calif.

## MIDIV TIME TRIALS SERIES

- Apr 21-22..... @ Heartland Motorsports Park, Topeka  
 May 19-20.....\* @ Iowa Speedway, Newton, Iowa  
 Jul 21-22..... @ Heartland Motorsports Park, Topeka  
 Aug 11..... @ Raceway Park o/t Midlands, Pacific Junction. Iowa  
 Sep 1-2..... @ Hallett Motor Racing Circuit, Okla.  
 Sep 22-23.....\* @ Raceway Park o/t Midlands, Pacific Junction. Iowa  
 Sep 28-30..... Time Trial Nat'l's @ NCM Mspts Park, Bowling Green, Ky.

## TRACK NIGHT IN AMERICA

- Apr 20..... @ Heartland Motorsports Park, Topeka  
 May 4..... @ La Junta Raceway, La Junta, Colo  
 May 31..... @ Heartland Motorsports Park, Topeka  
 Jun 6..... @ High Plains Raceway, Deer Trail, Colo  
 Jun 28..... @ Heartland Motorsports Park, Topeka  
 Jul 11..... @ High Plains Raceway, Deer Trail, Colo  
 Jul 19..... @ Heartland Motorsports Park, Topeka  
 Aug 15..... @ High Plains Raceway, Deer Trail, Colo  
 Aug 16..... @ Heartland Motorsports Park, Topeka  
 Sep 12..... @ High Plains Raceway, Deer Trail, Colo  
 Sep 20..... @ Heartland Motorsports Park, Topeka  
 Oct 18..... @ Heartland Motorsports Park, Topeka



# THE SHAPE OF SLALOMS

For our opening event of the season, Brian Tefft Jr. drew up a course loaded with many shapes of slaloms – 2-cone sweepers, unboxed Chicago boxes, gated walls, eyebrows, angle irons, even gentle wiggles. The result was a course that rewarded an aggressive but precise run.

Brian spent much of the winter in his garage reinventing his Miata. Followers on Facebook got a steady diet of parts on the floor, then on the car, sometimes bare steel or other materials, sometimes painted. Saturday for the test & tune found him under the hood (actually, the hood was totally off and on the ground) chasing some unexpected but inevitable gremlin, but by Sunday he was blazing through his course setting FTD at 46.299 sec. How fast was that? He was one of only three drivers to break 50 seconds and did it almost 4 sec below that bar. The others: STU winner Mark Hill, a good 2½ sec under at 47.496 which also was good for the top PAX of the event, and BS winner Jim Hund at 48.957.

After that, an eight-second spread covered the next 36 cars, all in the 50s. The closest contest was in Classic American Muscle-Traditional, where Jeremy Spink in a Camaro pulled out almost three seconds' improvement to claim the class by just 0.582 sec over Ken Kennedy, who brought out what used to be his drag-race Camaro.

Next-closest contest was a family affair, Russell and Laney Blume sharing a John Cooper Works model Mini and topping the 4-car HS class separated by only 0.829 sec. Laney was the fastest female on the lot at 52.9 sec. Top driver in a Ladies class was Sharon Brillhart at 54.1 in an ESL Miata.

Only two other classes were even in the one-sec range. One was ES, the largest class at seven cars, where age and treachery won over youth and enthusiasm – Rocky Entriken barely 1.0 sec quicker than Mason Smith (50+ years separating the two) and the margin was that much only because of pylon penalties (treachery comes into play) – in raw time the difference was only a tenth of a second.

That quick BS class was a Ford vs. Chevy duel, Jim Hund's Corvette holding a margin of just 1.5 sec over Jeff Hrenchir's Focus RS.

## ~~~ The Shape of Slaloms • PAX Rankings ~~~

Driver	Class	Time	Index	PAX
Mark Hill	STU	47.496	0.824	39.136
Jim Hund	BS	48.957	0.808	39.557
Kyle Edwards	GS	51.520	0.786	40.494
Russell Blume	HS	52.093	0.781	40.684
Jeff Hrenchir	BS	50.509	0.808	40.811
Brian Tefft Jr.	XP	46.299	0.884	40.928
Laney Blume	HS	52.922	0.781	41.332
Tyler Naden	STO4	52.468	0.791	41.502
John LaRondeau	FS	52.105	0.797	41.527
Frank Wietharn	SS-R	50.162	0.838	42.035
Monte Rans	STS	52.261	0.810	42.331
Rocky Entriken	ES	54.034	0.787	42.524
Sharon Brillhart	ESL	54.123	0.787	42.594
Conner Matthie	HS	54.666	0.781	42.694
James Green	CAM-S	51.509	0.831	42.804
Rob Dinwiddie	BS	53.520	0.808	43.244
Mason Smith	ES	55.122	0.787	43.381
J.D. Baughman	SMF	51.875	0.839	43.523
Don Herrick	HS	55.729	0.781	43.524
Matthew Polzin	FS	54.799	0.797	43.674
Bill Preheim	ES	55.674	0.787	43.815
Dennis Smith	GS	55.827	0.786	43.880
Marcia Haynes	ES	56.086	0.787	44.139
Kale Morris	ES	56.119	0.787	44.165
Jason Stockton	BS	54.834	0.808	44.305
Ann LaRondeau	FSL	55.647	0.797	44.350
Jeffrey Hund	FS	56.453	0.797	44.993
Aaron Loggan	STS	55.651	0.810	45.077
R. Abner Perney	STS	55.666	0.810	45.089
Jeremy Spink	CAM-T	56.070	0.807	45.248
Joey Green	XP	51.301	0.884	45.350
Nancy Smith	GSL	57.702	0.786	45.353
Henry Brillhart	ES	58.031	0.787	45.670
Ken Kennedy	CAM-T	56.652	0.807	45.718
Julianne Green	ESL	58.164	0.787	45.775
Lance Cochran	AS	56.887	0.814	46.306
Robert Lambert	CAM-T	57.870	0.807	46.701
John Taube	BS	58.078	0.808	46.927
Zach Smith	STP	58.477	0.815	47.658
Jim Gillett	ES	63.506	0.787	49.979
Connie Preheim	ESL	63.727	0.787	50.153

## SALINA REGION SOLO CHAMPIONSHIP • 2018

### • SALINA REGION MEMBER

### Points following The Shape of Slaloms

### \* HAS RUN THE MINIMUM 4 LOCAL EVENTS

SS-R	Frank Wietharn	12
AS	Lance Cochran	12
BS	Jim Hund	12
	Jeff Hrenchir	9
	Rob Dinwiddie	7
	Jason Stockton	6
	John Taube	5
ES	Rocky Entriken	12
	Mason Smith	9
	Bill Preheim	7
	Marcia Haynes	6
	Kale Morris	5
	Henry Brillhart	4
	Jim Gillett	3

*For most of the season all competitors are listed. However, only Salina Region members are eligible for championship awards and must be members before Oct. 1, and run at least four local events. As of Oct. 1 all non-member points are stripped. Associate Memberships received Oct. 1 or later are good for the following year.*

ESL	Sharon Brillhart	12	GS	Kyle Edwards	12	STU	Mark Hill	12
	Julianne Green	9		Dennis Smith	9	STS	Monte Rans	12
	Connie Preheim	7	GSL	Nancy Smith	12		Aaron Loggan	9
FS	John LaRondeau	12	HS	Russell Blume	12		Abner Perney	7
	Matthew Polzin	9		Laney Blume	9	STP	Zach Smith	12
	Jeffrey Hund	7		Conner Matthie	7	STO4	Tyler Naden	12
FSL	Ann LaRondeau	12		Don Herrick	6	CAM-S	James Green	12

CAM-T	Jeremy Spink	12
	Ken Kennedy	9
	Bob Lambert	7
SMF	J.D. Baughman	12
XP	Brian Tefft Jr.	12
	Joey Green	9
Wild	_____	0

† has run three classes  
\* NOTE: Divisional is not counted as a "local" event



# THE SHAPE OF SLALOMS

Salina Region SCCA ~ March 18, 2018

East Crawford Recreation Area, Salina

Class	Driver	Car	Make	Run 1	Run 2	Run 3	Run 4	Run 5	Best
SS-R	• Frank Wietharn	63	Corvette	50.588	49.384+2	50.162	48.254+1	49.060+1	50.162
AS	• Lance Cochran	5	Corvette	61.992	59.270	56.812+1	56.887	55.811+1	56.887
BS	• Jim Hund	87	Corvette	52.374	50.444	50.503	49.284+1	48.957	48.957
	• Jeff Hrenchir	17	Ford Focus RS	54.201	52.857	52.930+1	50.509	51.693	50.509
	Rob Dinwiddie	83	Porsche Cayman S	D.N.F.	54.343+1	53.883	D.N.F.	53.520	53.520
	Jason Stockton	70	Porsche Cayman S	55.872	55.634+1	54.834	55.541	D.N.F.	54.834
	John Taube	54	Corvette	60.547+1	62.560	59.713	59.051	58.078	58.078
ES	• Rocky Entriiken	4	Mazda Miata	57.361+2	55.924	56.127	55.213	54.034	54.034
	• Mason Smith	16	Mazda Miata	63.551	57.499	55.737+2	55.122	54.169+2	55.122
	• Bill Preheim	1	Mazda Miata	69.673	76.159	72.967	57.365	55.674	55.674
	Marcia Haynes	96	Toyota MR2	60.802+2	58.503+1	57.841	56.086	55.457+1	56.086
	Kale Morris	24	Mazda Miata	61.530	59.405	58.133	57.625	56.119	56.119
	Henry Brillhart	48	Mazda Miata	59.449+1	57.952+1	D.N.F.	56.469+1	56.031+1	58.031
	Jim Gillett	99	Mazda Miata	D.N.F.	D.N.F.	61.506+1	65.715	65.871+3	63.506
ESL	• Sharon Brillhart	28	Mazda Miata	57.438	55.976+1	55.714	55.530	54.123	54.123 FL
	Julianne Green	196	Toyota MR2	63.255	D.N.F.	58.164	58.328+1	64.002+3	58.164
	Connie Preheim	11	Mazda Miata	D.N.F.	D.N.F.	68.181	63.727	64.101	63.727
FS	• John LaRandeau	92	Mustang GT	56.799	D.N.F.	53.380	52.276	52.105	52.105
	Matthew Polzin	41	Mustang GT	61.971	59.223	57.221+1	D.N.F.	54.799	54.799
	Jeffrey Hund	25	Cadillac CTS-V	60.566	D.N.F.	58.058	56.453	56.871	56.453
FSL	• Ann LaRandeau	92	Mustang GT	58.685	55.647	55.952	55.674	D.N.F.	55.647
GS	• Kyle Edwards	88	Ford Focus ST	56.365+1	53.664	52.297	53.459	51.520	51.520
	Dennis Smith	6	Ford Focus ST	D.N.F.	56.844+1	55.827	55.957	55.828	55.827
GSL	• Nancy Smith	9	Ford Focus ST	60.403	60.347	59.219	57.702	58.510	57.702
HS	• Russell Blume	97	Mini Base JCW	52.786	52.835	52.093	52.301+1	52.119	52.093
	Laney Blume	197	Mini Base JCW	54.201+2	53.163+2	52.070+3	52.677+2	52.922	52.922
	Conner Matthie	7	Ford Fiesta ST	D.N.F.	57.272	55.838+1	54.666	54.820	54.666
	Don Herrick	8	Ford Fiesta ST	56.070	D.N.F.	D.N.F.	57.324	55.729	55.729
STU	• Mark Hill	45	Ford Focus RS	48.512	D.N.F.	48.051	47.493+1	47.496	47.496
STS	• Monte Rans	31	Honda CRX Si	55.880+1	55.218	55.581	53.448	52.261	52.261
	Aaron Loggan	4	Mazda Miata	56.654	56.666	55.651	55.709+1	55.834	55.651
	R. Abner Perney	6	Chevrolet Volt	D.N.F.	58.632	56.972	56.874+1	55.666	55.666
STP	• Zach Smith	13	Mustang Cobra	D.N.F.	60.223	59.876	58.477	59.157+1	58.477
STO4	• Tyler Naden	67	Mazda Miata	56.387	54.482	53.509	52.500	52.468	52.468
CAM-S	• James Green	33	Shelby Cobra	54.110	52.624	51.877	51.509	52.199	51.509
CAM-T	• Jeremy Spink	38	Camaro	61.033	59.091	58.971	D.N.F.	56.070	56.070
	Ken Kennedy	80	Camaro	63.562	57.352+2	57.355	56.872	56.652	56.652
	Robert Lambert	11	Plymouth GTX	63.314	60.767	57.870	56.781+2	59.264+1	57.870
SMF	• J.D. Baughman	89	Chevrolet Cobalt LS	55.309	53.969	51.875	52.596	52.479+1	51.875
XP	Brian Tefft Jr.	93	Mazda Miata	48.447+2	46.683	44.928+2	46.376+1	46.299	46.299 FTD
	Joey Green	133	Shelby Cobra	59.367+2	58.140+2	49.436+1	50.990+2	49.301+1	51.301

• = Trophy    FTD - Fast Time Of Day    FL - Fast Lady

"That is a mishmash of awesome parts poured into a box filled with bad ideas" -Huckleberry

"I went from zero to want in record time." -Knurled



## Membership Application

### Dear Prospective SCCA Member:

To apply for a membership in the Sports Car Club of America, the world's largest motorsport enthusiast organization, please complete the form below and return, with payment, to SCCA Membership Department, P.O. Box 299, Topeka, KS 66601-0299.

Name \_\_\_\_\_ Birthdate \_\_\_\_\_  
Address \_\_\_\_\_ Telephone \_\_\_\_\_  
City \_\_\_\_\_ State \_\_\_\_\_ Zip \_\_\_\_\_  
E-mail \_\_\_\_\_

Spouse Name \_\_\_\_\_ Birthdate \_\_\_\_\_  
Child's Name \_\_\_\_\_ Birthdate \_\_\_\_\_  
Child's Name \_\_\_\_\_ Birthdate \_\_\_\_\_

### Primary Interest:

Please indicate the area of SCCA in which you plan to participate, or interests you the most.

☐ Club Racing ☐ Time Trials/PDX ☐ Rally ☐ Rallycross ☐ Solo ☐ Vintage ☐ Pro Racing

### Membership Dues

(\*Includes Region dues)

<input type="checkbox"/> First Gear	\$50.00	<input type="checkbox"/> Individual	\$85.00	<input type="checkbox"/> Family	\$105.00
<input type="checkbox"/> 2 Year First Gear	\$90.00	<input type="checkbox"/> 2 Year Individual	\$150.00	<input type="checkbox"/> 2 Year Family	\$185.00
<input type="checkbox"/> 3 Year First Gear	\$125.00	<input type="checkbox"/> 3 Year Individual	\$215.00	<input type="checkbox"/> 3 Year Family	\$265.00

\* First Gear applies to members 24 years old and younger

### Amount Due

Membership Amount \$ \_\_\_\_\_  
Weekend Membership #1 \_\_\_\_\_ -\$15.00  
Weekend Membership #2 \_\_\_\_\_ -\$15.00  
Referred by SCCA Member \_\_\_\_\_ # \_\_\_\_\_ -\$15.00

First/Last Name & Member Number REQUIRED

**TOTAL DUE \$** \_\_\_\_\_

*I want to belong to **Salina (110)** Region (if no region is selected. The default region will be assigned by address). By accepting membership in the SCCA and any SCCA Region, I agree to conduct myself according to the highest standards of behavior and sportsmanship in a manner that shall not be prejudicial to the reputation of the Club or fellow members.*

Applicant's Name (Signature Required) \_\_\_\_\_

Date (Required) \_\_\_\_\_

### Payment Method:

☐ Check ☐ Credit Card ☐ Money Order

☐ **Auto-Renew with Credit Card** (Credit Card listed below will automatically be charged National and Regional dues prior to membership expiration date.)

Visa, MasterCard or Discover (only) Acct # \_\_\_\_\_ Exp. \_\_\_\_\_ CVV# \_\_\_\_\_  
Applications submitted by fax must be accompanied by Visa, MasterCard or Discover account number for payment.

Dues include payment for subscription to SportsCar (\$24 value). Dues are not deductible as charitable contributions

01/17

### Military Discount

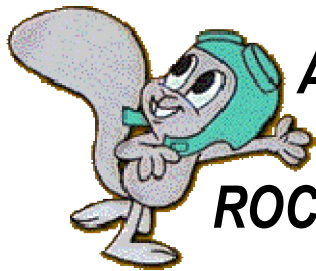
If you are in active United States Military service, you qualify for a \$35 rebate making your total dues just \$50 (\$70 for family). After joining SCCA and receiving your membership card, then mail, fax or email SCCA Member Services requesting the military rebate. Contact information for Member Services is:

Military Rebate  
SCCA Inc.  
6620 SE Dwight St.  
Topeka, Ks. 66619

Fax: 785-232-7213  
Email: [militaryrebate@scca.com](mailto:militaryrebate@scca.com)

\* Military deployed to hazardous duty areas are eligible to have SCCA dues waived by contacting SCCA.





## ASSORTED NUTS FROM ROCKET J. SQUIRREL

—ROCKY ENTRIKEN

The course Brian Tefft set up to begin our 2018 solo season required one of the most aggressive approaches I can remember. Go deep, brake hard, accelerate early.

It was a good win, especially since I got the blue magnet cone only a couple of times last year amidst a bunch of red ones. But it was nice also to realize that the winter had not accumulated too much rust, and that lessons learned a long time ago still served me well.

I've done a few Evolution Schools over the years, and recommend them highly to anyone. Whether you're just starting out or have years of experience, they have something to teach you. Registration is still open at

[www.evoschool.com](http://www.evoschool.com).

But back a decade before Jim McKamey and Jean Kinser founded what became the Evolution Performance Driving School (now owned by Mike "Junior" Johnson), I took a school from E. Paul Dickinson at his site in West Virginia. E. Paul was SCCA's first 5-time solo national champion, winning A Stock in an underpowered Porsche 911T the first four years the Solo Nationals existed (1973-76), adding his fifth in 1980 when he took A Prepared in a Lotus 7.

The 911T was not the hottest option of Porsche's 911 models, he said proudly, but good technique put it in first at Nationals on a road racing track in Wentzville, Mo.; an asphalt-paved oval/dragstrip in Lake Geneva, Wisc., the grippy concrete of Salina's own ECRA (then called Airport Park), and the narrow access roads of the Ohio State Fairgrounds in Columbus, Ohio. Four wildly different sites, surfaces and courses and Paul tamed them all.

His school began with basics, the very basics taught in high school driver's ed. How to sit in the car, how to hold a steering wheel, how to use the gearshift, and most importantly, why.

**Sitting** – This part is not much of an issue these days, since most of us accept that a good tight seatbelt is helpful to keep your butt in place so you don't end up sliding around in the seat. I grew to love the 5-point harness in my G Prepared Spitfire, pulling it as tight as I could. Now in the ES Miata all I have is the 3-point belt, but I have a CG-Lock clip on it to keep it tight. A trick is to move the seat back a notch or two, pull the belt as tight as I can, then move the seat forward to where it needs to be.

**Steering wheel** – E. Paul starts with the basic 10-and-2 handholds, then sometimes modifies it depending on where the spokes are. A 9-and-3 position works just as well. The spokes might become levers. The hands may rest with the thumb or the little finger atop the spokes if they are handy to do so. But the best trick Paul taught was "preparing the turn." I'm coming up on a left turn and he has me drop my right hand down to the 4 or 5 o'clock position. Then at the turn I

have about 180° of crank available without ever taking my hand off the wheel or even shuffling the wheel.

**Gearshift** – Dickinson taught open-hand shifting. So many of us grab a gearshift knob in a fist and try to stab it in the next hole ... and sometimes it's the wrong hole. His way was never to grab the knob, but to push the lever with pressure on the right place to make it go where it needed to be. With a 4-speed box, a 1-2 shift was a pull toward you (pressure on the far-right point of the knob); a 2-3 is just pushing it away from you (pressure on the near-left of the knob), the shift pattern more an X than an H. Not that we ever need it in autocross, but 3-4 is done with the palm of the hand turned away from you, pushing toward the passenger seat.

Nowadays with 5- and 6-speed boxes, getting into 3rd takes a little bit of patience. The 6-slot box today usually has a spring that will center the shift lever in the 3-4 slot, but it's easy to overpower the lever and end up with a 2-5 shift. It takes a momentary pause at neutral, just a brief hitch in the motion to let the lever center itself. Sometimes I'll even do it with the back of my hand so the lever finds its own way.

**Look ahead** – I found this the hardest lesson in Dickinson's school. Yeah, I was one who stared that cone right down to the hood of my car, but finally I got my "horizon up," as he phrased it. There was this right turn off a roadway at his school that led to a bigger parking lot, and a cone right at the apex of that turn. Finally he got my eyes off that cone and looking up to the next left turn, and I did the righthander so much faster I totally missed the left and damn near drove out the gate and onto the highway! It really cemented the point that looking ahead means you drive the turn faster.

Some say a "problem" with motorsports is that you can't practice it, like you can with baseball or golf. Wrong. Not only can you practice it, but you should every time you get behind the wheel. Doesn't matter what you're driving, whether your little sports car, a dually pickup, or an 18-wheel semi. The techniques are the same. The only thing you really can't practice is mashing your right foot, but that's the easy part.

*Always* sit up straight and belt yourself in tight (my CG-Lock is always in use, not just at events). *Always* use two hands on the wheel, and "prepare" the turns, you'll find yourself doing a lot less shuffling or cross-handing your wheel. *Always* shift gears open-handed, you'll end up more often in the gear you really wanted. *Always* be looking ahead, don't be staring at the taillights of the car in front of you, but at the ones in front of him.

Other techniques learned later – left-foot braking, racing lines, late apexing, even threshold braking – also can and should be practiced every time you drive somewhere, but not necessarily at speed. Your "track," of course, is always limited by the width of your driving lane and you should never do anything weird that surprises another motorist (for road racers, being predictable becomes a safe-racing survival skill – a fellow racer may anticipate that you'll cut in front of him, but the soccer mom or the kid delivering pizzas won't).

Some of that may seem strange and even uncomfortable at first. But then one day you'll be driving down the road and suddenly realize you did it without thinking about it.

It just became habit. Muscle memory at work.

**SCCA Membership notes:**

The categories of SCCA membership are somewhat confusing. In order to be eligible for all the programs of SCCA you need to be a National member, which includes a "local" region of your choice. This becomes your Region of Record.

Normally your RoR is the area in which you live, but it doesn't have to be. We have members who live in other Regions' territories, and some of those regions have members who live in our territory.

You may also join as many other regions as you like, paying their local dues for the purpose of winning local championship points, receiving newsletters and participating in their programs. These are "Associate" memberships. Salina Region's Associate Members are eligible for all our championships, voting rights, region offices and other member benefits.

The final option is to simply pay local region dues, in which case you are merely a newsletter subscriber, and not eligible for Regional awards, Divisional points or to compete in major SCCA events.

**If you live in Manhattan, Ft. Riley or Junction City** and have enjoyed competing in or attending our events, we'd love to have you become a member of our happy little club. If you should choose to join SCCA in our Region, be sure to use the membership form found in a Write Line or be sure to indicate "SALINA REGION" in the space above the signature. Geographically, Riley and Geary counties are in territory of our Kansas Region neighbors and SCCA will put you there if not told otherwise. Of course, once an SCCA member, you're welcome at any region's events. You'll find a listing of our neighboring regions' events in the "Events Elsewhere" calendar inside.

**Associate memberships are due now for the year 2018 • • •**

- A code in the corner of your mailing label indicates status. A code like 09-18 indicates a Region-of-Record member expiring at the end of that month. **A code such as A18 or FA18 indicates an Associate Member expiring at the end of that year.** A code with an asterisk, such as A\*18, is an Associate Member paying Salina Region dues through SCCA, and renewing with the national membership.
- A month indicates someone not a member of Salina Region who ran with us at a recent event or asked for a newsletter. Other codes refer to complimentary copies being sent this year.
- Associate membership only means region-of-record is elsewhere. Associates are fully-vested members of Salina Region. Dues are \$15.00 both for single memberships and for family memberships (which includes spouse).
- Subscriptions are available for non-SCCA members also at \$15.00 per calendar year. Please send a check payable to the Salina Region SCCA, c/o The Write Line, 2731 Scott Avenue, Salina, KS 67401.

**You must be a member to enter SCCA events. There are several different types of membership available, including Regular, Family, First Gear (under 25) and Military, plus short-term Weekend Memberships (we charge \$10). Find more information at [www.salinascca.org](http://www.salinascca.org), [www.scca.com](http://www.scca.com), or call Salina Region membership chair Rocky Entriken at 785-827-5143 or e-mail [rocky@spitfire4.com](mailto:rocky@spitfire4.com).**



Like us on Facebook  
[www.facebook.com/SalinaSCCA](https://www.facebook.com/SalinaSCCA)

**The Write Line**  
 Newsletter of the Salina Region  
 Sports Car Club of America  
 2731 Scott Avenue  
 Salina, KS 67401