

# The White Line

~ March 2016 ~



Randy Puls, ES Mazda Miata (Lizzie Enlow-Brown Photo)

The official newsletter of the Salina Region SCCA

## Regional Executive Views REVIEWS

I'm sure by now you have heard of the tragedy at Excel Industries in Hesston, my hometown. Four individuals lives ended too early and 17 others were injured. Please keep these people in your thoughts and prayers as they face the healing process.

On a brighter note we just finished our annual awards banquet. Fajitas Mexican Restaurant in Minneapolis provided us with an abundance of excellent Mexican cuisine. Along with the presentation of the awards the 2016 board of directors was introduced.

With the season quickly approaching, there is not much time left to make those between-season changes or prepare a different car. We will start our season with a test and tune March 19 followed by the first solo the very next day.

Special events this year will be Mirror Khana XXXVIII, the fourth R.E. Challenge, Octoberfast 27, and a possible one-day Divisional at Salina. There will also be the annual Evolution School for those of you wanting to hone your current driving skills.

For those of you who are ready to go to the next level there are three Divisionals already scheduled (maybe four; stay tuned) along with the Nationals. See the

**News flash – Registration  
open for Salina Region's  
Evolution Schools!  
See Page 6.**

Salina Region and Midwest Division calendars printed on Page 2.

Remember, everyone is very important to the function of this club as we are a volunteer organization and it takes everyone's help to put on an event. Besides the obvious tasks of registration, timing and scoring, safety, course setup and corner workers, there are other jobs like grid, course teardown and trailer loading at the end of the day. We hope to have a PR person available to help the "newbies" at their first event to get through car prep, registration, course walk, and any other

questions they may have so they have an enjoyable first event. Also, club board meetings are usually held following the event and all club members plus guests are invited to join us for any input they

wish to provide. You also may contact one of the board members if you have a suggestion to improve the club in any way.

Starting this year we will have an additional challenge at ECRA with the addition of a dog park on the east side of the course so anyone wanting to design a course will have to keep that in mind and abide by the safety rules required by SCCA.

So get ready, everyone, the season is practically upon us. See you on the course.

—Monte Rans

Regional Executive

### ► Next Events ◀

**Test & Tune - Saturday**  
**Season Opener Solo - Sunday**  
**March 19-20, 2016**

**East Crawford Recreation Area**

**Pre-register (save \$5) – use link at [www.salinasc.ca.com](http://www.salinasc.ca.com)**

On-site registration opens 8:30, closes 10:00 ~ Course open to walk by 9:00

Novice guided coursewalk 10:00 ~ Driver's meeting 10:30 ~ Cars on course by 11:00

### Next

#### **Business Meeting**

Saturday, Mar. 19  
After Test & Tune

**Location TBA**

*Business meetings  
are open to all  
members and guests*





## Board Members ~ 2016

### • Regional Executive

MONTE RANS  
620-327-2711  
monter@embarqmail.com

### • Assistant R.E. / Webmaster Development Committee Chair

RADLEE BIEN  
479-616-6195  
radleebien@gmail.com

### • Secretary

SUZANNE SCOTT-HOLMES  
(409) 350-2091  
suc@notsue.com

### • Treasurer

CONNIE PREHEIM  
785-392-2532  
cpreheim42@hotmail.com

### • Past R.E.

BILL PREHEIM  
785-392-2532  
cpreheim42@hotmail.com

### • Solo Chair

DENNIS SMITH  
785-243-6753  
smnck@att.net

### • Member At Large

Chief Registrar  
NANCY SMITH  
785-243-5192  
smnck@att.net

### • Member At Large Newsletter and Membership

ROCKY ENTRIEN  
785-827-5143  
rocky@spitfire4.com

### • Member At Large

Chief of Tech  
CLINT HOLMES  
(409) 363-9889  
suc@notsue.com

### • Member At Large

Equipment Manager  
ABNER PERNEY  
785-822-8570  
abscars@yahoo.com

### • Member At Large Asst. Equipment Manager

KEN KENNEDY  
785-643-2225  
kennethkennedy@cox.net

### • Member At Large Social Media /Facebook

ARTT MANN  
785-565-3155  
racermann@gmail.com

## Salina Region Schedule ~ 2016

All at East Crawford Recreation Area unless noted elsewhere

Event	Chair
March 19 – Test & Tune	Bill Preheim
March 20 – Solo	Bill Preheim
April 15-17 – Evolution Schools (Friday-Phase 1 ~ Saturday-Phase 2 ~ Sunday-Challenge School)	Rocky Entriem
April 16-17 – Twin Solos	Dhruvil Shah
May 15 – Solo	Brian Tefft
June 4-5 – Solo – Mirror Khana XXXVIII (Possible Divisional Championship event, pending approval)	Monte Rans
July 10 – Solo	Radlee Bien
Aug 7 – R.E. Challenge 16.1	Abner Perney
Aug. 21 – R.E. Challenge 16.2 - Yoder	Wichita Region
Sep 11 – Solo	Clint Holmes
Oct 2 – Octoberfast 27	Salina Region Board
Nov 6 – Solo	Suzanne Scott-Holmes

### MiDiv



### SPS/R&S MiDiv Solo Series - 2016

Apr 30-May 1 — Heartland Park Topeka  
June 25-26 — Neosho, Mo.  
June 4-5 — Salina (pending approval)  
July 30-31 — Lincoln, Neb.

SCCA 2016 Solo Nationals ~ Sep. 7-10 ~ Lincoln, Neb.

## MEETING MINUTES

(Subject to correction and approval at the next Salina Region board meeting)

February 20, 2016

Salina Region SCCA Feb. 20, 2016, meeting was called to order by R.E. Monte Rans at 4:45 p.m. at Fajitas Mexican Restaurant, Minneapolis, KS. Board members present were Rocky Entriem, Dennis and Nancy Smith, Monte Rans, Connie and Bill Preheim, Artt Mann, Abner Perney, Radlee Bien, Clint Holmes, and Suzanne Scott-Holmes. Guests included Haylee, and Samantha Terrill, Rodney Walters, Dhruvil Shah, Brian Tefft and others arriving for the region banquet.

The Jan. 9, 2016, minutes were presented and approved unanimously. Motion to approve by Dennis, seconded by Bill.

The treasurer's report was presented and approved unanimously. Motion to approve by Dennis, seconded by Monte.

**Old Business - SCCA Convention wrap-up** - Monte suggested a laminated helmet identification sheet to be in trailer. Nancy confirmed that she is a licensed SCCA regional registrar. Rocky reported that it is important that incident reports be filled out for every incident that occurs.

**Schedule** - Dennis, Radlee, and Rocky discussed possibility and conflicts for adding more events to schedule.

**Junior Karting Program Rules** - Dennis reported Youth Stewards do not need to be a Safety Steward.

**Trailer** - Abner reported that the radio charging system in the trailer has been completed. Connie paid for tags on the trailer but has yet to receive the tags.

**New Business - Dog Park** - Rocky offered ideas for solutions to a dog park the city has planned for a location in the southeast portion of the East Crawford Recreation Area, but has no real answers at this time. One suggestion was a card to hand out to dog owners notifying them of who we are and what we are doing and how we can work together.

**Solo Safety** - Dennis reported that hard-card membership cards must be visible at each event (hard card holders need not sign the event waiver). A total of eight people attended Solo Safety Training at the MiDiv Convention with six (*Continued to Page 3*)



## The Salina Region Solo Championship ~ 2016

1. Points will be scored at all of Salina Region's Regional Solo events (also referred to as "local" events, including the R.E. Challenge at Yoder). Points also will be scored at the SCCA Solo Nationals in Lincoln, Neb. [Sep. 6-9] (NOTE: for 2016 that is 11 local events, possibly including a Divisional event, plus the Nationals, total 12 events.)

2. Points will be scored for every driver at each Salina Region event on the basis of: 12-9-7-6-5-4-3-2-1 for the top nine drivers. Any driver placing 10th or lower will also receive one point.

3. Points will be compiled at year-end only for Salina Region members. Drivers eligible for the Salina Region Solo Championships must be Salina Region members (Region of Record or Associate) by the end of September. Weekend Membership does NOT satisfy this requirement.

4. To encourage participation in a Divisional Championship event conducted by Salina Region (if held) and the SCCA Solo Nationals, those events will score regular points as in Item 2 above, plus competitors will score a bonus of up to 10 points for every car they beat. For example, if you place 15th at Nationals (1 point) in a 28-car class, you can score a total of 11; if you place 4th (6 points) in a 5-car class, you can score a total of 7 points.

5. Of the possible 12 events that can be scored in 2016, the best 8 or 9 will be counted. A driver must score points in a minimum of four local Salina Region events. (NOTE: the throw-out total is calculated by taking the Nationals plus two Regional events. In years when we conduct a Divisional, that also is calculated in the throw-out total.)

6. One car makes a class. Cars must be legal for the class entered.

7. A driver may compete only once for points at any event. Second-entry runs (fun runs) will not count for points and will not take positions away.

8. A driver competing in more than one class during the year will score points in each class separately.

9. Drivers competing in three or more classes through the year will be considered for the "Wild Car-d" awards. Points scored in Wild Car-d will be those scored in the regular class. Wild Car-d award winners cannot be an award winner in any other class.

10. Ties for awards will be broken first by going to the driver who scores the most wins; second to the driver who beats the other the most in head-to-head competition. If still tied, it will stand and duplicate awards will be given.

11. Should a driver qualify for championship awards in two or more classes, one award will be given representing the highest placing with all qualified-for classes listed thereon.

### Welcome New Members

- **Rob Dinwiddie**, Derby, is a serious Mini Cooper addict who ran in STO6 at two events last year and plans a move to DSP this year ... and we wish him a speedy recovery from recent surgery to remove a few inches of colon.
- **Matthew Morford**, Hillsboro, shows a hardtop Miata on his Facebook page. We look forward to seeing him at his first events this season.

### MEETING MINUTES

(Continued from Pg. 2) of those being new to the training. Clint and Radlee were among the six new Safetys.

Event Chair and Safety Assignments - Dennis passed around a sign-up roster.

Other - Age and Height Requirements - Dennis, Rocky and Monte discussed the requirements for ride-along passengers and reported that 12 years of age or 57" tall is correct.

FM Transmitter - Monte, Radlee, and Dennis discussed the possibility of using existing FM transmitter to report lap times live at events.

Schedule - Rocky wants a final schedule ASAP for newsletter.

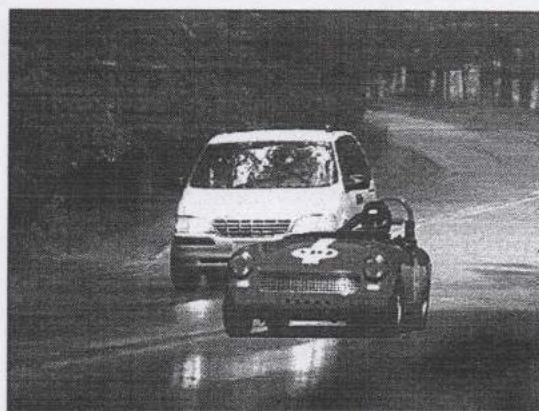
Rule Books - Rocky will order seven Solo Rules books for the six people who requested one and an extra to keep in the trailer.

Next meeting - March 19, 2016 after the Test & Tune Event, location TBA.

Meeting adjourned at 6:12 p.m.

Submitted by: Suzanne Scott-Holmes, secretary.

### Utterly Obscure British Car Humour



British sports cars can still compete successfully today...

(...if you choose your opponents carefully!)

"Just going fast has never been it for me. It's always been about going faster than the person you're racing and pushing the limits of your car to find out how you can go one-hundredth of a second faster. It's more the competition."

-Jeff Gordon



## Events Elsewhere 2016



A calendar of Solo and RallyX events by the Wichita, Kansas, Kansas City, Nebraska, NeOkla and Oklahoma Regions of SCCA. Go see how others do it!

**ALWAYS CONFIRM THE EVENT BEFORE MAKING A LONG TRIP!**

(\* = Salina Region event on this date)

### AUTOCROSS

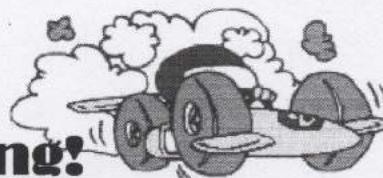
- Mar 13 ..... Wichita @ Yoder (Test & Tune)  
 Mar 19 ..... NeOkla @ Fair Meadows, Tulsa Fairgrounds (Test & Tune)  
 ..... Oklahoma @ Remington Park (Test & Tune)  
 Mar 20 ..... NeOkla @ Fair Meadows, Tulsa Fairgrounds  
 ..... Oklahoma @ Remington Park, Oklahoma City  
 Apr 3 ..... NeOkla/Oklahoma @ Old Tanger Outlet Mall, Stroud  
 ..... Wichita @ Yoder  
 Apr 9 ..... KC @ Blue Rvr Prec Dr Cntr, Independence (Test & Tune)  
 Apr 10 ..... KC @ Blue Rvr Prec Dr Cntr, Independence  
 ..... Nebraska @ Lincoln Airpark  
 Apr 16...\* KC @ Blue Rvr Prec Dr Cntr, Independence (Novice Sch.)  
 Apr 17...\* KC @ Blue Rvr Prec Dr Cntr, Independence  
 Apr 23 ..... Nebraska @ Lincoln Airpark (Starting Line School)  
 Apr 24 ..... Nebraska @ Lincoln Airpark  
 ..... NeOkla @ Fair Meadows, Tulsa Fairgrounds  
 ..... Oklahoma @ Remington Park, Oklahoma City  
 ..... Wichita @ Yoder  
 May 15 ..... NeOkla @ Old Tanger Outlet Mall, Stroud  
 May 22 ..... Wichita @ Yoder  
 May 27-28 .. Nebraska @ Lincoln Airpark (Spring Nationals ProSolo)  
 May 29-30 .. Nebraska @ Lincoln Airpark (Spring Nationals ChampTour)  
 Jun 5.....\* KC @ Blue Rvr Prec Dr Cntr, Independence  
 Jun 10-12... Kansas @ Heartland Park Topeka (Match Tour)  
 Jun 19 ..... Nebraska @ Lincoln Airpark  
 ..... Oklahoma @ Remington Park, Oklahoma City  
 ..... Wichita @ Yoder  
 Jul 2 ..... KC @ Blue Rvr Prec Dr Cntr, Indep. (Starting Line School)  
 Jul 3 ..... KC @ Blue Rvr Prec Dr Cntr, Independence  
 Jul 9-10...\* KC/Kansas @ Heartland Park Topeka  
 Jul 10 ..... Nebraska @ Lincoln Airpark  
 ..... NeOkla/Oklahoma @ Old Tanger Outlet Mall, Stroud  
 Jul 17 ..... Wichita @ Yoder  
 Jul 23 ..... KC @ Blue Rvr Prec Dr Cntr, Independence (Solo School)  
 Jul 24 ..... KC @ Blue Rvr Prec Dr Cntr, Independence  
 ..... Nebraska @ Lincoln Airpark  
 ..... Oklahoma @ Remington Park, Oklahoma City  
 Jul 31 ..... Wichita @ Yoder (Endurocross)  
 Aug 14 ..... KC @ Cricket Amphitheater, Bonner Springs  
 ..... NeOkla @ Fair Meadows, Tulsa Fairgrounds  
 Aug 20-21 .. KC/Kansas @ Heartland Park Topeka

### RALLYCROSS

- Feb 28 ..... Nebraska @ I-80 Speedway, Greenwood  
 Mar 13 ..... Nebraska @ I-80 Speedway, Greenwood  
 Mar 20 ..... KC @ Thunder Valley Sand Drags, Grain Valley, Mo.  
 Apr 16 ..... Nebraska @ I-80 Speedway, Greenwood (RallyX School)  
 Apr 17 ..... Nebraska @ I-80 Speedway, Greenwood  
 May 22 ..... Nebraska @ I-80 Speedway, Greenwood  
 Jun 26 ..... Nebraska @ I-80 Speedway, Greenwood

## Go

## Racing!



Five road course tracks are within a 3½-hour drive of Salina. Be part of the action as a race worker -- flagging on corners, timing, grid, tech, etc. Or driver?

- Hallett Motor Racing Circuit, Hallett, Okla.
- Kansas Speedway, Kansas City, Ks
- Heartland Park Topeka, Ks.
- Motorsports Park Hastings, Hastings, Neb.
- Raceway Park of the Midlands, Pacific Jct. Iowa

- Apr 9-10 ..... Majors @ Hallett Motor Racing Circuit  
 Jun 4-5 ..... Mid-Am @ Raceway Park of the Midlands  
 Jul 30-31 ..... Mid-Am @ Hallett Motor Racing Circuit



## SCCA SOLO NATIONALS

Mark your calendar! Here's the Run Days for the specific classes at the 2016 Nationals in Lincoln, Neb.

Tue-Wed Sep. 6-7	Thu-Fri Sep. 8-9
SS	BS
AS	ES
CS	FS
DS	HS
GS	SS-R
STF	STS
STX	STR
STU	STP
FSP	SSP
SM	ASP
SMF	BSP
CP	CSP
FP	DSP
BM	ESP
DM	SSM
EM	XP
KM	DP
JA	EP
JB	AM
CAM-T	CM
CAM-S	FM
CAM-C	FSAE

## 2016 GOALS:

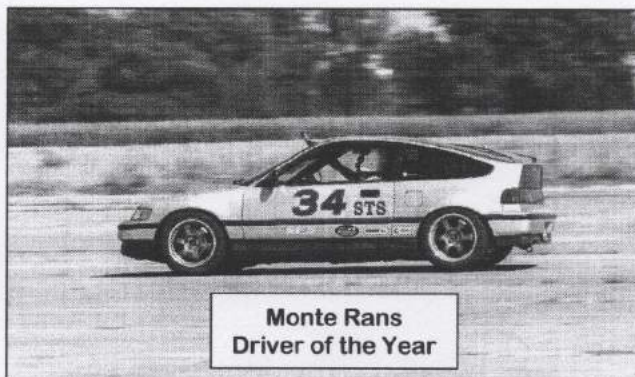


## BE FASTER THAN 2015



# Top awards presented at the Salina Region awards banquet

Car photos by Lizzie Enlow-Brown



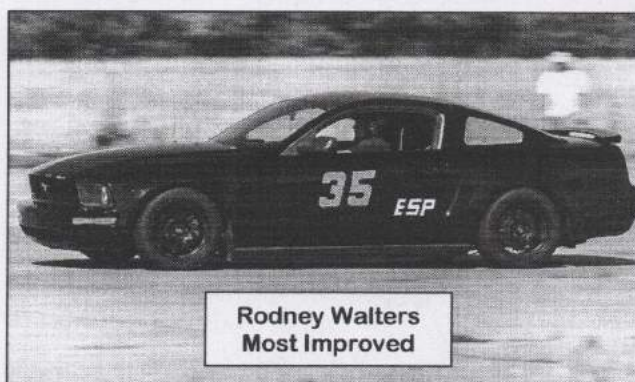
**Monte Rans**  
Driver of the Year



**James Hund**  
Rookie of the Year



**Daniel Rowland**  
Newcomer of the Year

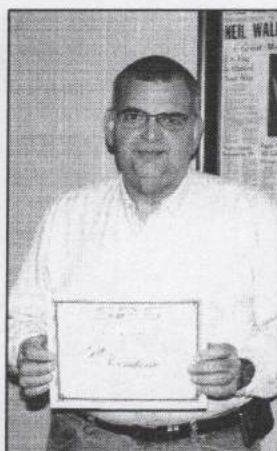


**Rodney Walters**  
Most Improved

Also, the the Year-at-a-Glance awards were presented to all who scored trophy finishes during the 2015 season. Class champions received a nice new helmet bag, and plaques were presented to class runners-up.



The R.E. Challenge Cup was presented, now emblazoned with Salina Region as 2015 winner.



Solo Performance Specialties provided five gift certificates as door prizes. The top prize, a \$50 certificate, was won by Steve Swartz. \$25 certificates were won by Rocky Entriken, Bob Lambert, Samantha Terrill and Nancy Smith. Region champions also received \$10 awards from the Salina Area Chamber of Commerce.



# Registration is open for 2016 Evolution Schools

Salina Region's annual Evolution Schools will once again offer three days of instruction in the art of autocross using your own car.

The schools will take place April 15, 16 and 17.

Registration is open now at [www.evoschool.com](http://www.evoschool.com). Go to their website, enter Salina's zipcode 67401 (you may have to



scroll down a bit), and the registration links for the three schools will pop to the top of the column.

The base price is \$260 for one school, with discounts for those taking two or all three schools. Click on the lowest level school you want and the drop-down message includes links to do additional schools and provide the discounts. The schools are open to anyone, not just SCCA members.

Evolution brings in top-level instructors, many of them current or past National Solo Champions in one-on-one sessions. You will get in almost a season of autocross runs in one day! Bring a car in good mechanical shape and with plenty of tread on the tires – but not necessarily your best performance tires. It's said that somewhat less sticky rubber enhances the learning experience because they magnify your errors. Also fill the tank and dress for the weather, the school runs rain or shine. It's an all-day class. Lunch is provided including drinks

**Phase 1** (Friday, Apr. 15) teaches basic performance driving skills. The course builds students' skill levels by introducing new ideas to improve their times. Students both ride and drive with Evolution's trained, professional drivers to learn where they are fast and where they need to improve. Combined with race-proven skills, concepts, and techniques, this course will improve the performance of all drivers on the both road and the track. Even

experienced drivers benefit from the Phase 1 course as a refresher for those things they've forgotten over the years or perhaps never learned.

**Phase 2** (Saturday, Apr. 16) is the advanced class.

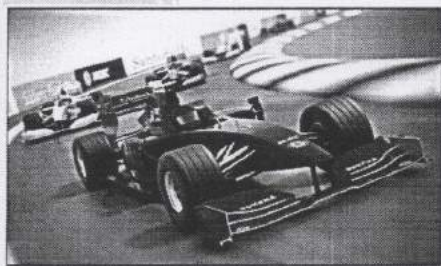
Building upon the skills learned in Phase 1, the school takes the driver into new areas of mental race preparation, allowing the

Phase 1 skills to be applied as second nature. Various driving exercises are conducted throughout the day to improve the driver's visual and mental imaging of the course. This course has proven itself to reinforce the importance of Phase 1 skills and transferring those skills to every autocross course you may encounter. The Phase 2 course design is not the same as used in Phase 1 and generally has higher speed sections.

**Challenge School** (Sunday, Apr. 17) is for those who have some autocrossing seat time under their belt and have reached a place where it seems shaving time on course seems impossible. The Challenge school forces students to combine everything they have previously learned, but on a longer, quicker, national-style, real world autocross course, complete with quick slaloms and hard shutdowns. The goal is to drive home the Phase 1 and Phase 2 concepts and make sure you still are using them while increasing the length of time on course. In addition, you will receive instant feedback, this time from a slightly different perspective. This school has different meaning for every person that takes it. Come with an open mind and the willingness to try things you normally would have left at home. At the end of the day comes the challenge – can you beat your instructor, both of you driving your own car?

**Evolution wants everyone to drive at 10/10ths and will encourage it!!!**

## OFF TO THE RACES II



**RAFFLE**

### 2016 Formula One™ US Grand Prix

#### Ticket Package

Two (2) VIP Hospitality Passes at Circuit of the Americas  
Austin, TX and \$5,000 Cash for Travel Expenses

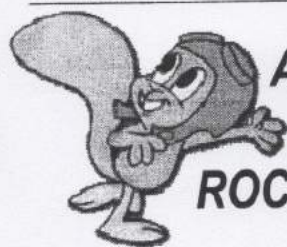
Drawing will be held on June 27, 2016 at 12PM MDT

**Raffle Tickets starting at only \$20!**

Purchase Tickets online at  
[www.sccaraffleem.org](http://www.sccaraffleem.org)

**SCCA**  
FOUNDATION  
Sports Car Club of America





## ASSORTED NUTS FROM ROCKET J. SQUIRREL

—ROCKY ENTRIKEN

Salina Region enjoys being headquartered in a pretty cool city as regards city and county support for our brand of recreational activity. For years, decades even, SCCA has had the support of the City of Salina, and when needed also Saline County and even the Salina Airport Authority, so that we could go out and kill cones on a Sunday afternoon.

The most recent example would be the new dog park being installed by the Salina Animal Shelter alongside of the pavement at the East Crawford Recreation Area. This raised some concern among our region's leaders, so last week I went to visit with Vanessa Cowie, the Animal Services Manager at the shelter.

We'd barely begun the conversation and I had not yet even raised the issue of dog walkers coming in during our events when she offered, "We'd just close the park when you have your events." Her demeanor said "no big thing." She also explained they'd need to close it several times a year anyway for cleanup and maintenance, and if they knew our calendar might just coordinate their planned closings with our event schedule.

It turned out she was well aware of our activity at ECRA and expressed a desire that the dog park not create impediments to Salina Region autocross.

It is noteworthy, however, that her friendly and supportive attitude only continues a longstanding positive and encouraging temperament towards Salina Region (and autocross activities even before Salina Region existed).

Go back to when the Squires of Salina were the primary local club in the 1970s – I was new here then – and a day when then-Police Chief John Woody and Parks & Recreation Director Don Jolley took me on a drive around to various locations, helping me scout sites including some of which I was utterly unaware.

That led to our earliest events at ECRA, then just a bare mile-long slab of concrete called Airport Park for lack of a better name. It used to be Salina's municipal airport before the city took over Schilling AFB. SCCA road raced there two or three times (in fact, it was the venue of the first SCCA club race where I was a race worker, soaked to the skin in a record rainstorm while flagging on a corner – that's where I learned timing & scoring, sheltered and dry, was the place to be).

I began the Mirror Khana at Airport Park in 1974. This was long before the parallel taxiway became Markley Road; the Mirror Khana course went out on that pavement. The course had a flat-out lane shift, left to right, just where the Flor de Sol entrance is now. Four or five times a car spun there and backed into one of the concrete posts holding up the cable boundary of the gold course. I duly reported the breakage to Jolley, who had a reputation as a somewhat irascible fellow but I never saw it. I kept telling him to send me a bill for the repairs. He never did.

The Recreation Department established a policy that events at Airport Park could be booked no more than one year in advance. I learned this when I went to book a Mirror Khana on my preferred first weekend in June and found Tony's Pizza already had the date for a private circus for their employees. Then I

figured out that if I went down the Friday before *this* year's Mirror Khana it was exactly one year to *next* year's Mirror Khana. Never did I get any pressure or political grief because I'd slipped in ahead of the city's largest employer.

When the city decided to create the East Crawford Recreation Area and build softball fields there, it also was decided to extend the taxiway – renamed Markley – a mile south to Magnolia. The new asphalt extending south belonged to the county while the concrete portion belonged to the city. The two governments made an agreement that Markley Road would never be closed for any reason. I learned of that agreement on the Saturday morning of a Mirror Khana weekend. I called Don Jolley. Within an hour barriers were up closing the road for our event. Jolley had actually spent some favors to get it closed and told me it would be the last time he could do it – our event went off as planned.

The city later confirmed the agreement to me, but then I was able to visit with the Saline County Commission and explain the situation. They passed a resolution grandfathering our activity and allowing the road closure that one weekend a year. Thus we kept running Mirror Khana out on the taxiway until Flor de Sol was built – since the development's only entrance was off Markley it became impossible to close it and that's when we shortened the course. Nobody asked us, we just did it. With city and county favoring us so often, it was only fair that sometimes we should return the favor.

We had six Solo Nationals on the Airport Park pavement beginning in 1975 (Kansas Region was host; I was event chair), then resuming in 1980 for five of the next six years with Kansas City Region as host four times and Saginaw Valley Region once. When the Nationals passed 600 entries and finally outgrew the place, the Salina Airport Authority got on the SCCA bandwagon and the Nationals moved to the Salina Municipal Airport, using the huge apron by the "Big Bertha" hangar at the north end. Airport crews could be seen out there every evening patching holes we'd torn up. We ran nine more Nationals there, the entry growing past 700, before we again outgrew the place and the event moved to Topeka in 1995 after 15 times in Salina. Only one other community had done it as many as two times.

Salina Region was formed in 1990. Many considered ours the best concrete in Kansas and they loved to come run here. Even before our region was formed, the Mirror Khana (then a Wichita Region event) was a centerpiece of the Kansas Solo II Championship encompassing events by Wichita, Kansas and Kansas City Regions. *The city helped out again by bringing out a set of bleachers from which people could view the competition.*

As ECRA was being developed there were plans to plant trees in the grass islands between the runway and taxiway. After our safety concerns were expressed, the trees were all situated down the middle, none along the edges.

One year a circus came to town, set up at East Crawford for three or four days, and left behind a ton of mess for the city to clean up. With that the city established a policy requiring a \$100 deposit to book the site – and immediately waived the policy for us because they knew we left the place better than we found it.

As much as the city has helped us over the years, we've taken the opportunity to reciprocate as occasions presented themselves. When a fund drive was going on to finance the construction of Evans Field, Salina Region donated. You'll find our name on the plaque adjacent to the concession stand. More recently we helped with the cost of the nice new concrete patch replacing that asphalt bump across the runway.

Salina and SCCA – it's a relationship to be cherished.





## Membership Application

### Dear Prospective SCCA Member:

To apply for a membership in the Sports Car Club of America, the world's largest motorsports enthusiast organization, please complete the form below and return, with payment, to SCCA Membership Department, P.O. Box 299, Topeka, KS 66601-0299.

### PLEASE PRINT OR TYPE

Name \_\_\_\_\_ Birthdate \_\_\_\_\_

Address \_\_\_\_\_ Telephone \_\_\_\_\_

City \_\_\_\_\_ State \_\_\_\_\_ Zip \_\_\_\_\_

E-mail \_\_\_\_\_

Spouse Name \_\_\_\_\_ Birthdate \_\_\_\_\_

Child's Name \_\_\_\_\_ Birthdate \_\_\_\_\_

Child's Name \_\_\_\_\_ Birthdate \_\_\_\_\_

### Primary Interest:

Please indicate the area of SCCA in which you plan to participate, or interests you the most.  
(please check only one box)

☐ Club Racing ☐ Time Trials/PDX ☐ Rally ☐ RallyCross ☐ Solo ☐ Vintage ☐ Pro Racing

### Membership Dues:

(Includes Salina Region dues -- \$15 for individual members, family members including spouse are free with payment of National dues)

	1 year	2 years	3 years		1 year	2 years	3 years	
<input type="checkbox"/> Individual	\$80	\$140	\$200	<input type="checkbox"/> First Gear	\$45	\$75	\$95	(Age 24 and under)
<input type="checkbox"/> Family	\$100	\$180	\$245	<input type="checkbox"/> Military	Same as individual or family			
(includes children under age 21)				(Then apply for a rebate, see below)				

### Amount Due

Membership Amount \$ \_\_\_\_\_

Weekend Membership #1 \_\_\_\_\_ -\$15.00

Weekend Membership #2 \_\_\_\_\_ -\$15.00

Referred by SCCA Member \_\_\_\_\_ # \_\_\_\_\_ -\$15.00

First / Last Name & Member Number REQUIRED

TOTAL DUE \$ \_\_\_\_\_

## Salina

~~I will become a member in the region I reside in or place me in the \_\_\_\_\_ region.  
By accepting membership in the SCCA and any SCCA Region I agree to conduct myself according to the highest standards of behavior and sportsmanship in a manner that shall not be prejudicial to the reputation of the Club or fellow members.~~

Applicant's Name (Signature Required) \_\_\_\_\_

Date (Required) \_\_\_\_\_

Payment Method: ☐ Check ☐ Credit Card ☐ Money Order

Visa/MasterCard (only) Acct# \_\_\_\_\_ Exp. \_\_\_\_\_

Applications submitted by fax must be accompanied by a Visa or MasterCard account number for payment.

Dues include payment for subscription To SportsCar (\$24 value)  
Dues are not deductible as charitable contributions)

2/10

### Military Discount

If you are in active United States Military service, you qualify for a \$35 rebate making your total dues just \$45 (\$65 for family). After joining the SCCA and receiving your membership card, then mail, fax, or email a copy of your active duty orders or military identification card to:

Military Rebate

SCCA Inc.

P.O. Box 19400

Topeka, KS 66619-0400

Fax: (785) 232-7213

Email: [militaryrebate@scca.com](mailto:militaryrebate@scca.com)

\* Military deployed to hazardous duty areas are eligible to have their dues waived by contacting SCCA.



# Just Idling Around

—ABNER PERNEY

On the biggest Not-a-Real-Holiday of the season, Super Bowl Sunday, one of the good TV ads was the Mini Clubman introduction "Defy Labels." The internet follow-up email starts "Defiantly Different" and goes immediately to "The Largest, Most Refined Mini Ever."

They should change the name to "Oxymoron," but it is a very fine compact station wagon and you can't buy such a car, USA legal, from any other car company. I love everything about it, but the price, even though outfitted as I would like, is "only" about \$32,000. That includes the panoramic roof, the paddle shifter automatic, the 3-cylinder turbo, the cold weather package and a bunch of gimcrackery that is standard these days. That is under the average new car transaction for January which was right at \$34,000. So it could be deemed a good deal considering the driving quality, the features, the Cool aspect and the relative rarity. I think for myself I still like the slightly smaller, but still practical, 4Door Hardtop. But, I have to dispose of my inoperables before I get myself anything that nice, new and sporty.

Here's the sad list of Inops. Make me an offer:

1. 2001 Mazda Protégé, only driven on weekends and special occasions, originally an SSC race car. Under 5000 miles, but 95% of them full throttle and high rpms. Only needs an engine and a few minor updates.

2. 2007 Zap truck 3 wheel electric, legally a motorcycle in Kansas, needs six big 12-volt batteries and some TLC.

3. 1980 Fiat 2000 Spyder. Under 100,000 miles, only needs a battery and tune-up and a world of cosmetic work.

4. 1987 Subaru GL wagon, with the desirable Dual Drive four wheel drive system – like a Jeep high and low range with 5-speed manual. Engine runs but has been overheated in past and leaks coolant profusely.

Help me, I'm a car addict, who is too clumsy to be his own mechanic!

In other Abner's Auto addiction/affliction news, I

have taken in trade an unusual 1988 automobile that is classed in HS and that I will probably run in at least one event, unless it sells soon. It is a Buick Reatta! This was an old man's sports Coupe – later a Convertible was offered too – that is, of course, non-competitive against cars of this millennium, but will be fine for me to begin to accumulate points in my continuing effort to remain the most experienced Novice Solo driver in the entire world!

The Reatta features The famed GM3800 V-6 driving the front wheels, two seats, 15-inch wheels, and aerodynamic concealed headlights. The basic dashboard is very reminiscent of the same-year



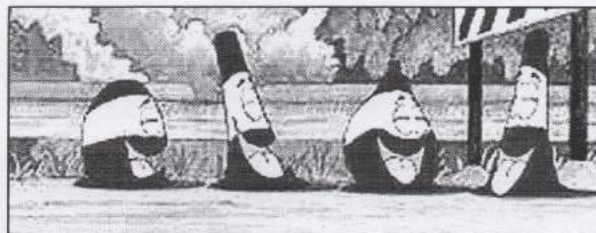
Pontiac Fieros, but the Buick has the first touch screen dash unit for controlling the heat, A/C, gauge display and trip computer and it still works! Plus it has the huge competitive advantage of being RED with white, custom hand painted pinstripes!

I am seriously planning running HS this season, and with several different cars. I did buy a 2013 car that might be halfway competitive, at least on our region's level, but is still not on anyone's top 10 or even top 50 autocross cars list. The Ford Focus Electric has 225/50/17 tires, and was introduced to the world on Jay Leno's show way back in 2011 or '12, as the vehicle driven in kind of a gimmick autocross format.

I only saw three or four celebrities run. I never did see who "won" overall. I suppose the results are out there somewhere on the Intergoogolefacetubenet. The Protégé wheels and tires of which I have 8, should fit it! If that car works out I will have to use it most events. It is entered in the March events. If I get the Fiat Spyder going, and end up having access to a certain 2001 Prelude that I mentioned last article, then I will be well on my way to a very entertaining autocross year.

Hope to see lots of you out at East Crawford this year.

Happy 2016 Trails, —Abner





**SCCA Membership notes:**

The categories of SCCA membership are somewhat confusing. In order to be eligible for all the programs of SCCA you need to be a National member, which includes a "local" region of your choice. This becomes your Region of Record.

Normally your R.o.R. is the area in which you live, but it doesn't have to be. We have members who live in other Regions' territories, and some of those regions have members who live in our territory.

You may also join as many other regions as you like, paying their local dues for the purpose of winning local championship points, receiving newsletters and participating in their programs. These are "associate," "dual" or "secondary" memberships.

The final option is to simply pay local region dues, in which case you are merely a newsletter subscriber, and not eligible for Regional awards, Divisional points or to compete in major SCCA events.

**If you live in Manhattan, Ft. Riley or Junction City** and have enjoyed competing in or attending our events, we'd love to have you become a member of our happy little club. If you should choose to join SCCA in our Region, be sure to use the membership form found in a Write Line or be sure to indicate "SALINA REGION" in the space above the signature. Geographically, Riley and Geary counties are in territory of our Kansas Region neighbors and SCCA will put you there if not told otherwise. Of course, once a member, you're welcome at any region's events. You'll find a listing of our neighboring region's events in the "Events Elsewhere" calendar inside.

**SALINA  
REGION**  
**SPORTS CAR CLUB OF AMERICA**

**Associate memberships are due now for the year 2016 . . .**

- Associate memberships are for the calendar year provided your National membership is active. Join now, and your membership begins immediately and runs through 2016. Dues are \$15.00 for single memberships or for family memberships (which includes spouse).
- Subscriptions are available for non-SCCA members also at \$15.00 per calendar year. Please send a check payable to the Salina Region SCCA, c/o The Write Line, 2731 Scott Avenue, Salina, KS 67401.
- A code in the corner of your mailing label indicates status. A date (such as 03-16) indicates a Region-of-Record member expiring at the end of that month. **A code such as A16 or FA16 indicates an Associate Member expiring at the end of that year.** A month indicates a non-member who ran with us at a recent event or asked for a newsletter. Other codes refer to complimentary copies being sent this year.

**You must be a member to enter SCCA events.** There are several different types of membership available, including Regular, Family, First Gear (under 25) and Military, plus short-term Weekend Memberships (we charge \$5). Find more information at [www.salinascca.org](http://www.salinascca.org), [www.scca.com](http://www.scca.com), or call Salina Region membership chair Rocky Entriiken at 785-827-5143 or e-mail [rocky@spitfire4.com](mailto:rocky@spitfire4.com).



[www.salinascca.org](http://www.salinascca.org)

Like us on Facebook  
[www.facebook.com/SalinaSCCA](https://www.facebook.com/SalinaSCCA)

**The Write Line**  
Newsletter of the Salina Region  
Sports Car Club of America  
2731 Scott Avenue  
Salina, KS 67401